

# Data Delusions

How Math, Metrics, and Analytics Can Mislead Us

May 19, 2023

Project **T**ransformation  
**B**y  
**D**esign



# DATA DELUSIONS

1 Humans + Data

2 Flaws & Frames

3 Metric Fixation





# Cognitive Tendencies



- **Equate precision with accuracy and objectivity**

As of March 2020

**741,882 Big Macs  
Sold Per Day in U.S.**

*Source: I made it up.*





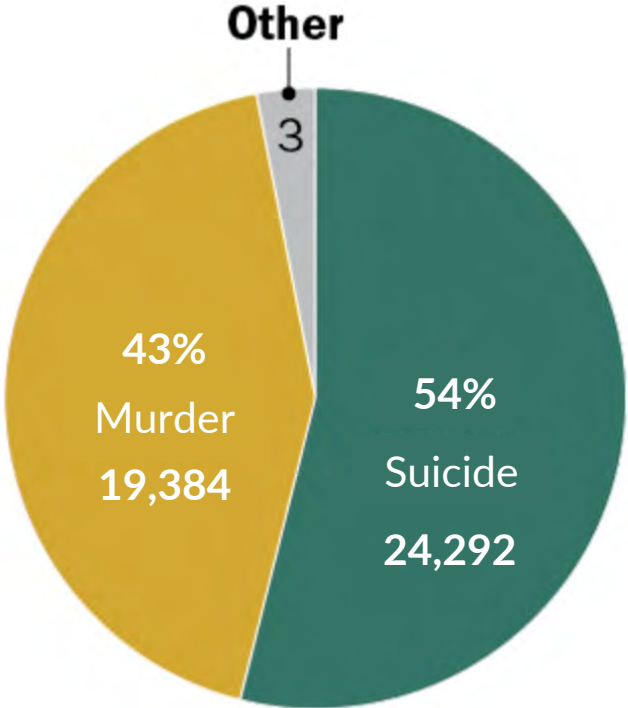
- **Equate precision with accuracy and objectivity**
- **Underestimate impact of emotions on reactions to data**

# EMOTIONS IMPACT HOW WE REACT

1

Mars is 30 million miles away from Earth.

2



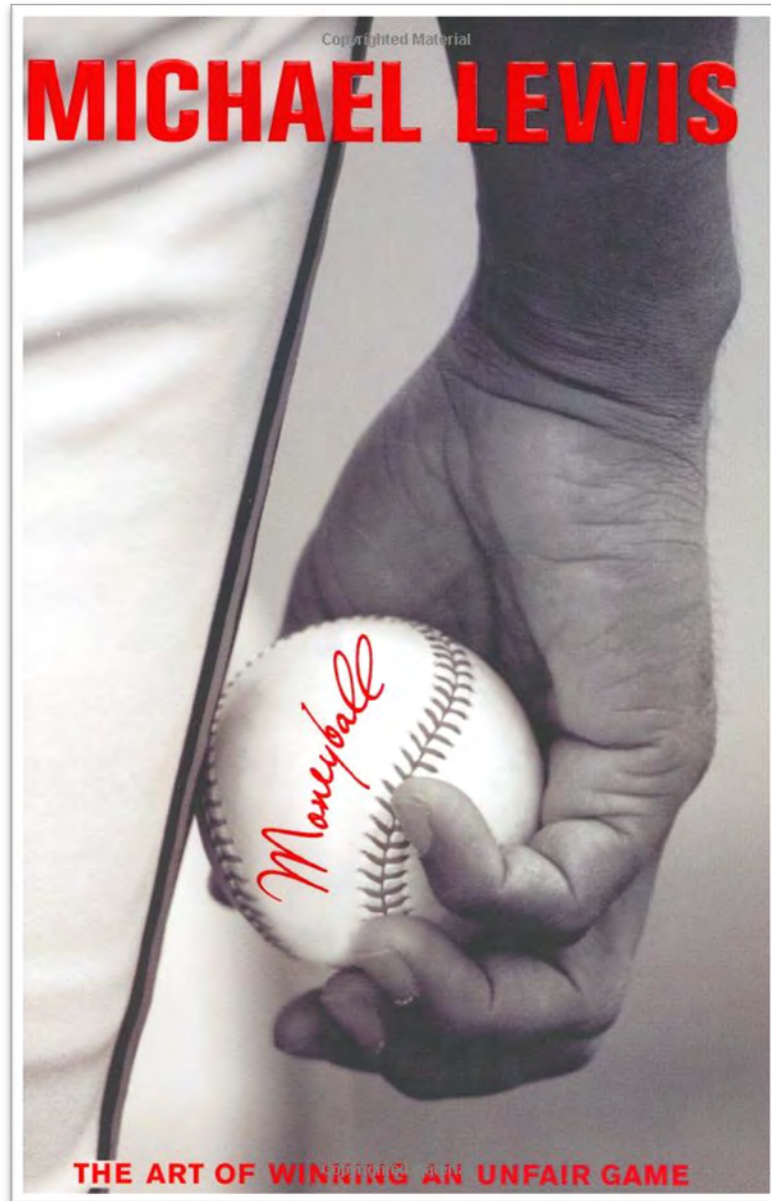
Suicides accounted for more than half of U.S. gun deaths in 2020.

*Source: Pew Research Center*



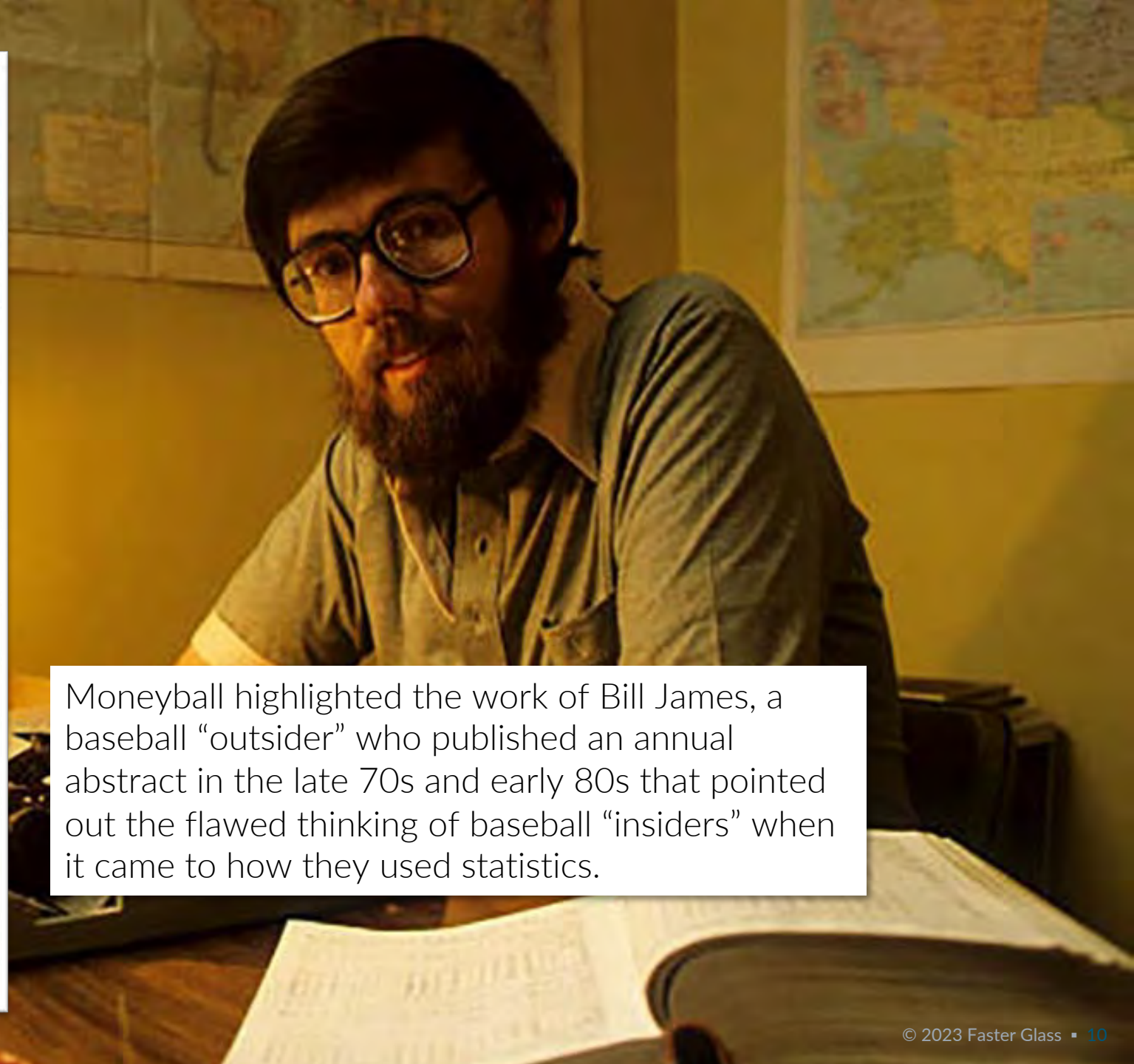
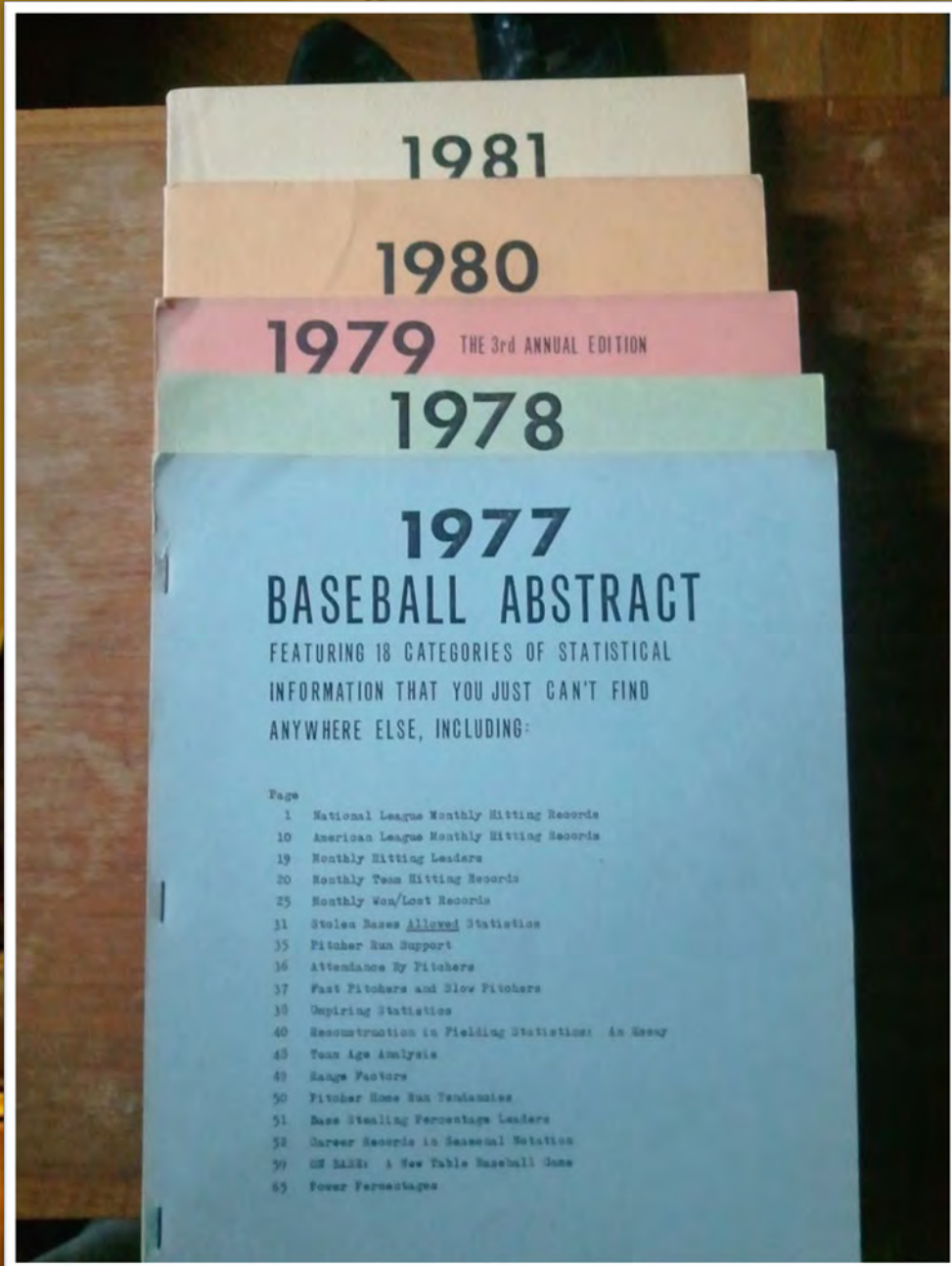
- **Equate precision with accuracy and objectivity**
- **Underestimate impact of emotions on reactions to data**
- **Substitute numbers for understanding**



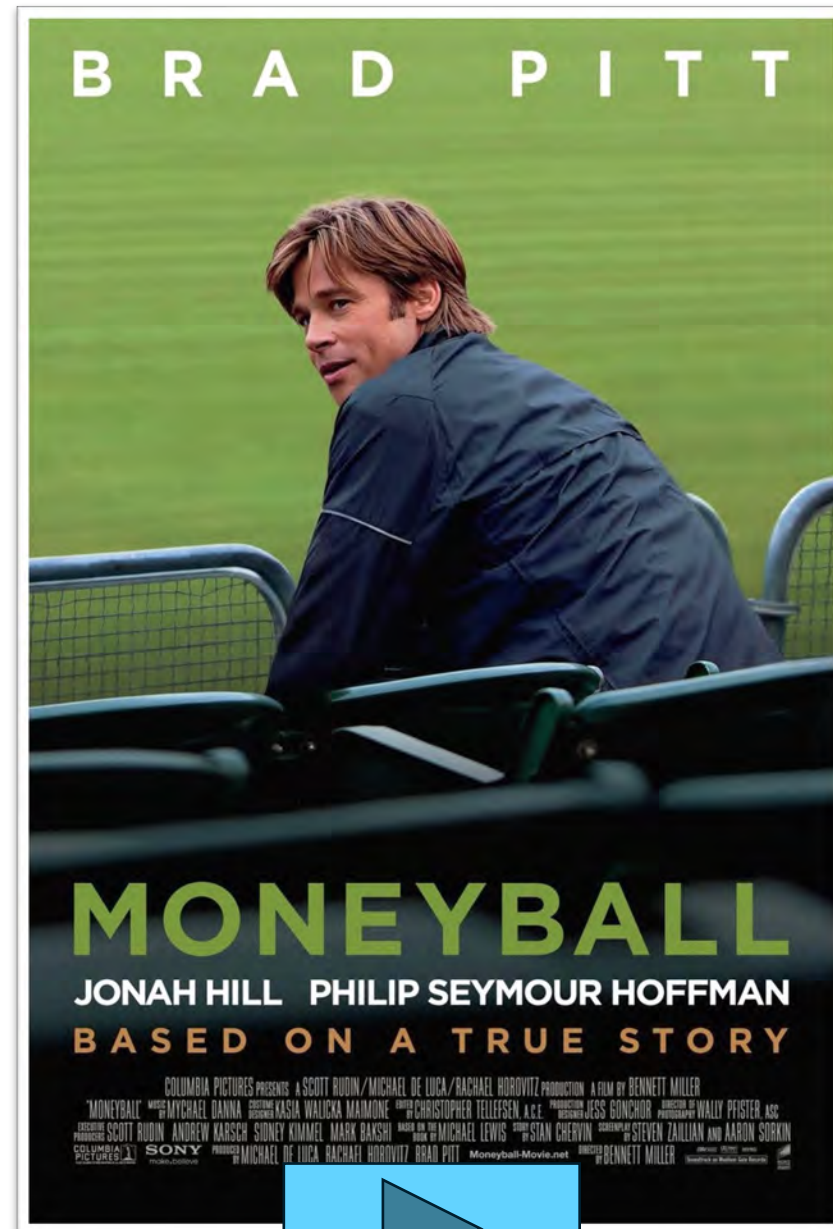
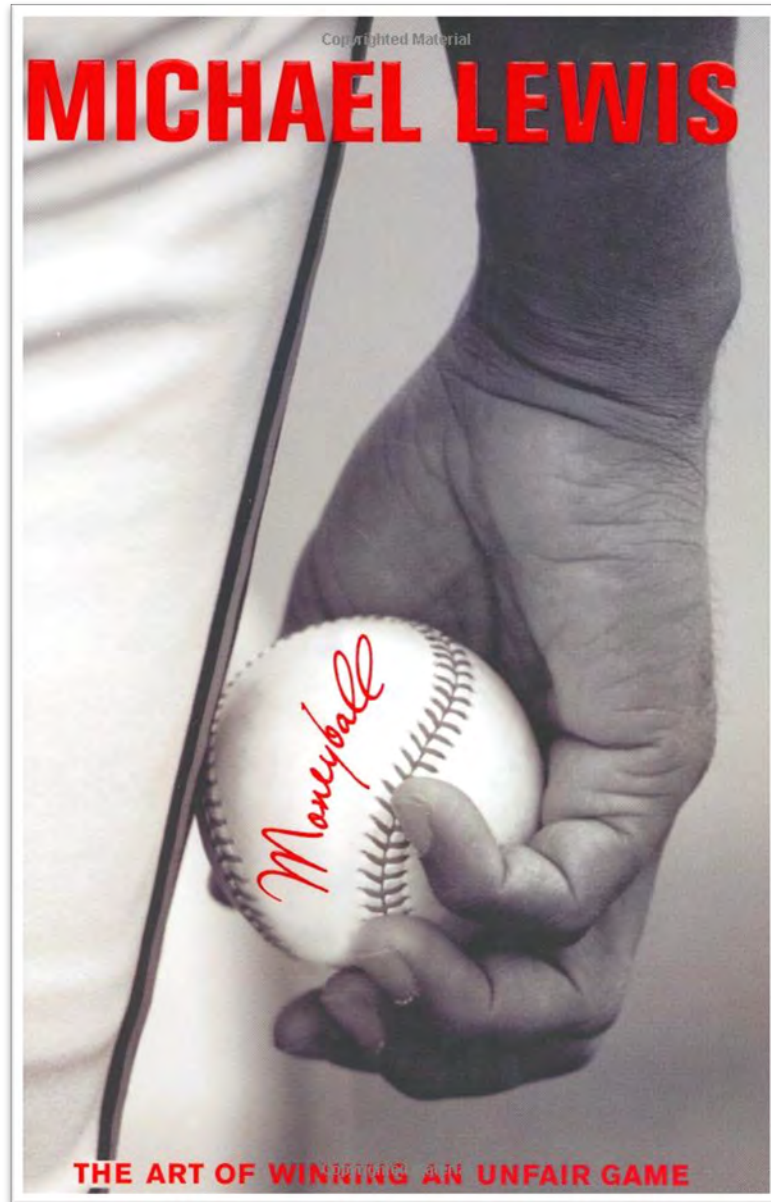


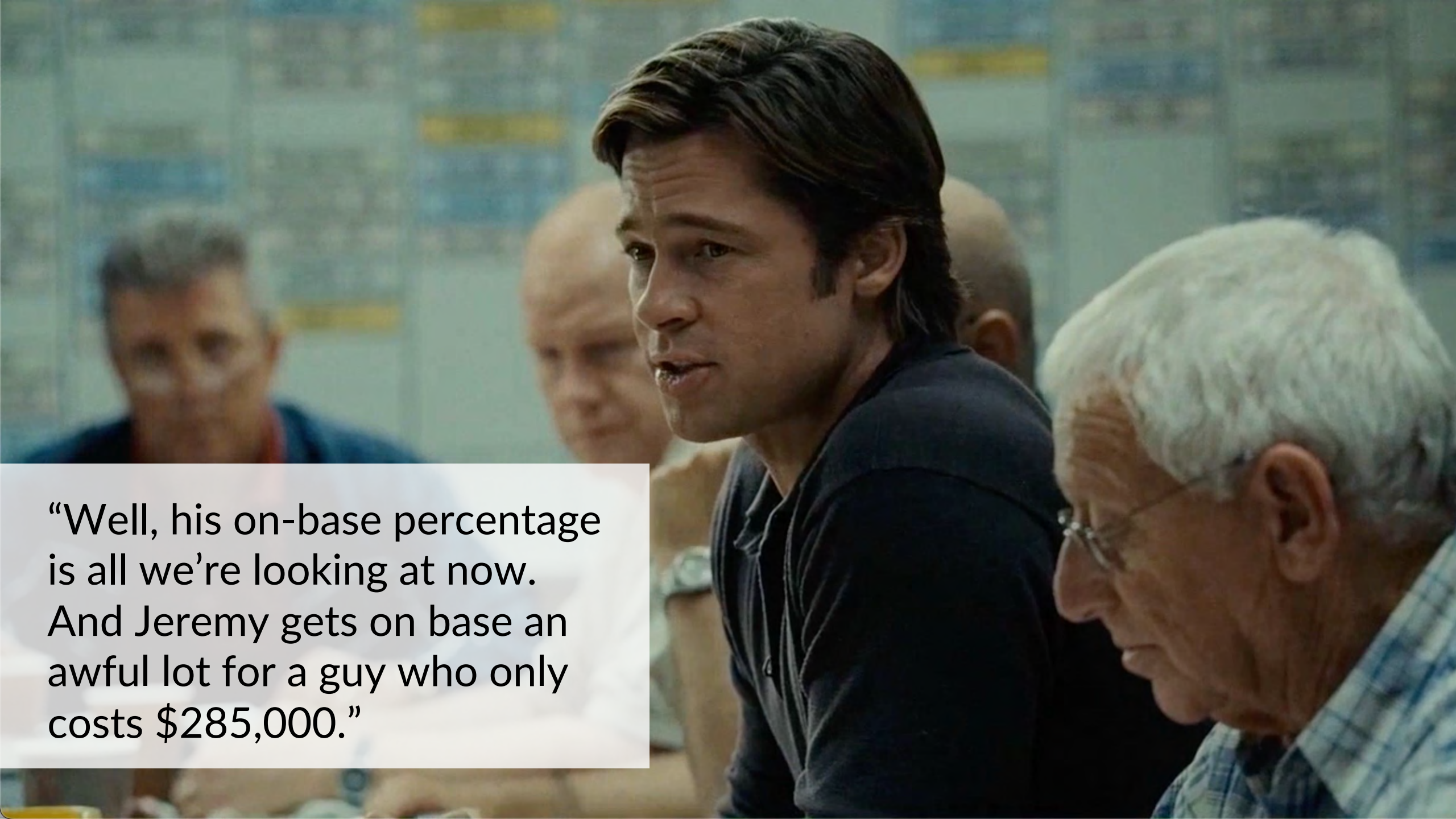
# Moneyball

The Art of Winning  
An Unfair Game

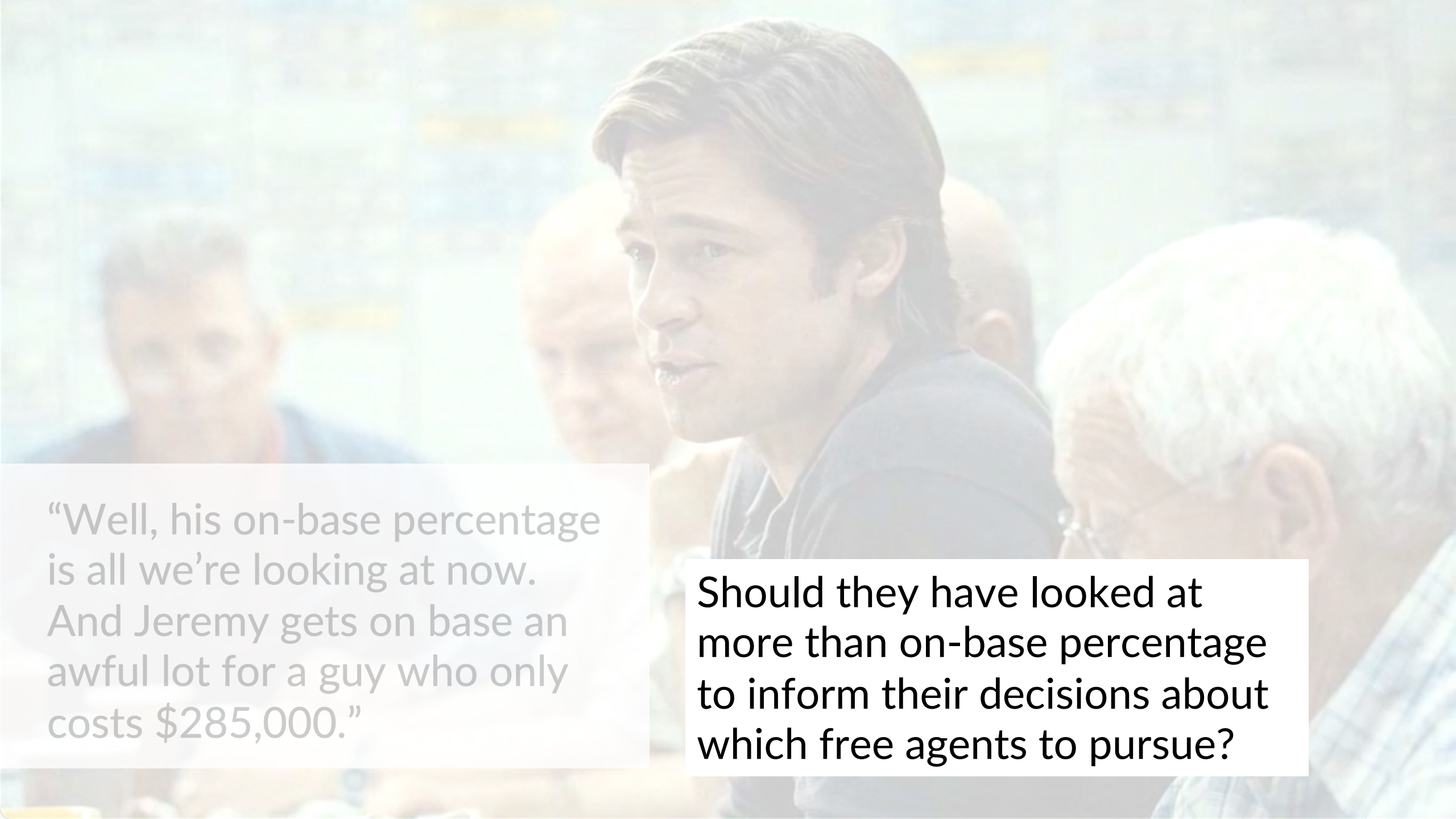


Moneyball highlighted the work of Bill James, a baseball “outsider” who published an annual abstract in the late 70s and early 80s that pointed out the flawed thinking of baseball “insiders” when it came to how they used statistics.



A still from the movie 'Moneyball' showing Brad Pitt as Peter Dinklage in a meeting. He is looking towards the right with a serious expression. In the foreground, the back of an older man's head with white hair and glasses is visible. The background is a wall covered in blue papers and charts.

“Well, his on-base percentage is all we’re looking at now. And Jeremy gets on base an awful lot for a guy who only costs \$285,000.”

A photograph of Brad Pitt in a meeting, looking to the left. He is wearing a dark blue shirt. In the background, other people are visible but out of focus. The image has a light, semi-transparent overlay.

“Well, his on-base percentage is all we’re looking at now. And Jeremy gets on base an awful lot for a guy who only costs \$285,000.”

**Should they have looked at more than on-base percentage to inform their decisions about which free agents to pursue?**



- **Equate precision with accuracy and objectivity**
- **Underestimate impact of emotions on reactions to data**
- **Substitute numbers for understanding**

# College Rankings

If we better understood how college rankings are calculated by U.S. News & World Report, we might think differently about how much credence we should give them.

**U.S. News & WORLD REPORT**

Find the **BEST COLLEGES** for You!

**NEW! EXCLUSIVE RANKINGS 2022 EDITION**

- ▶ How Will the Pandemic Affect **ADMISSIONS?**
- ▶ Tips on Writing a **Great Essay**
- ▶ Everything You Need to Know About **Finding the MONEY**
- ▶ A College Road Trip: **Washington, D.C.**



**73% increase in assaults on CBP officers in 2017**






## 73% increase in assaults on CBP officers in 2017

786 assaults = 73%↑  
despite ↓ in apprehensions





## **73% increase in assaults on CBP officers in 2017**

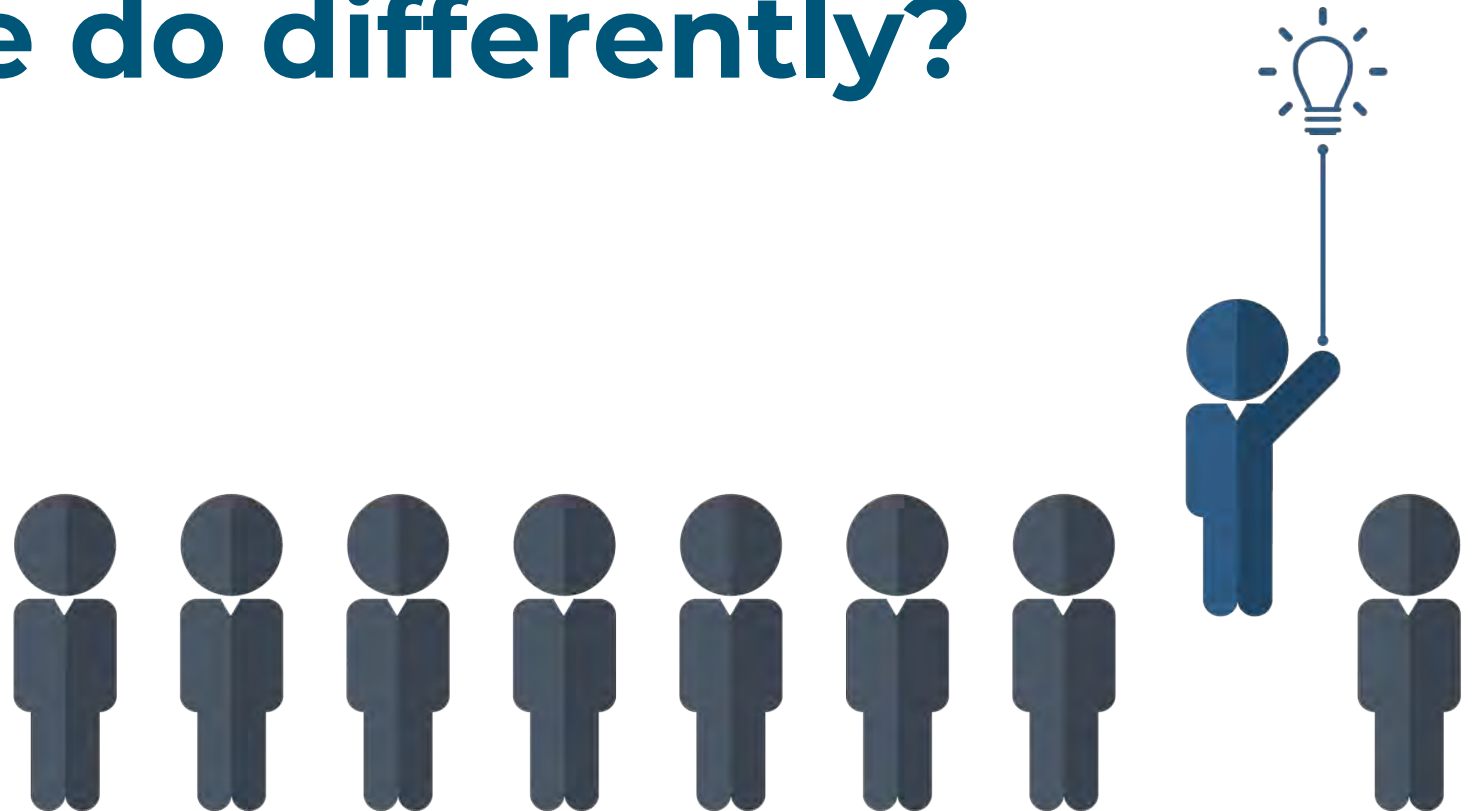
1 incident = 126 assaults

7 officers x 6 detainees x 3 projectiles (rocks, bottles, tree branches)



- **Equate precision with accuracy and objectivity**
- **Underestimate impact of emotions on reactions to data**
- **Substitute numbers for understanding**

# What can we do differently?



# CURIOSITY

- Equate precision with accuracy and objectivity
- Underestimate impact of emotions on reactions to data
- Substitute numbers for understanding

# DATA DELUSIONS

1 Humans + Data

2 Flaws & Frames

3 Metric Fixation



# DATA DELUSIONS

1 Humans + Data

2 Flaws & Frames

3 Metric Fixation



# LONDON UNDERGROUND USAGE



**“Crush Capacity” = 1,000+ people**  
**Average occupancy = 130**





**Average occupancy = 130?**

# LONDON UNDERGROUND USAGE



9 Trains x 0

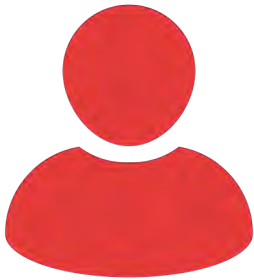
1 Train x 1,000

**Average Occupancy = 100**

# LONDON UNDERGROUND USAGE



Average # of Riders per Train (Train-centric)



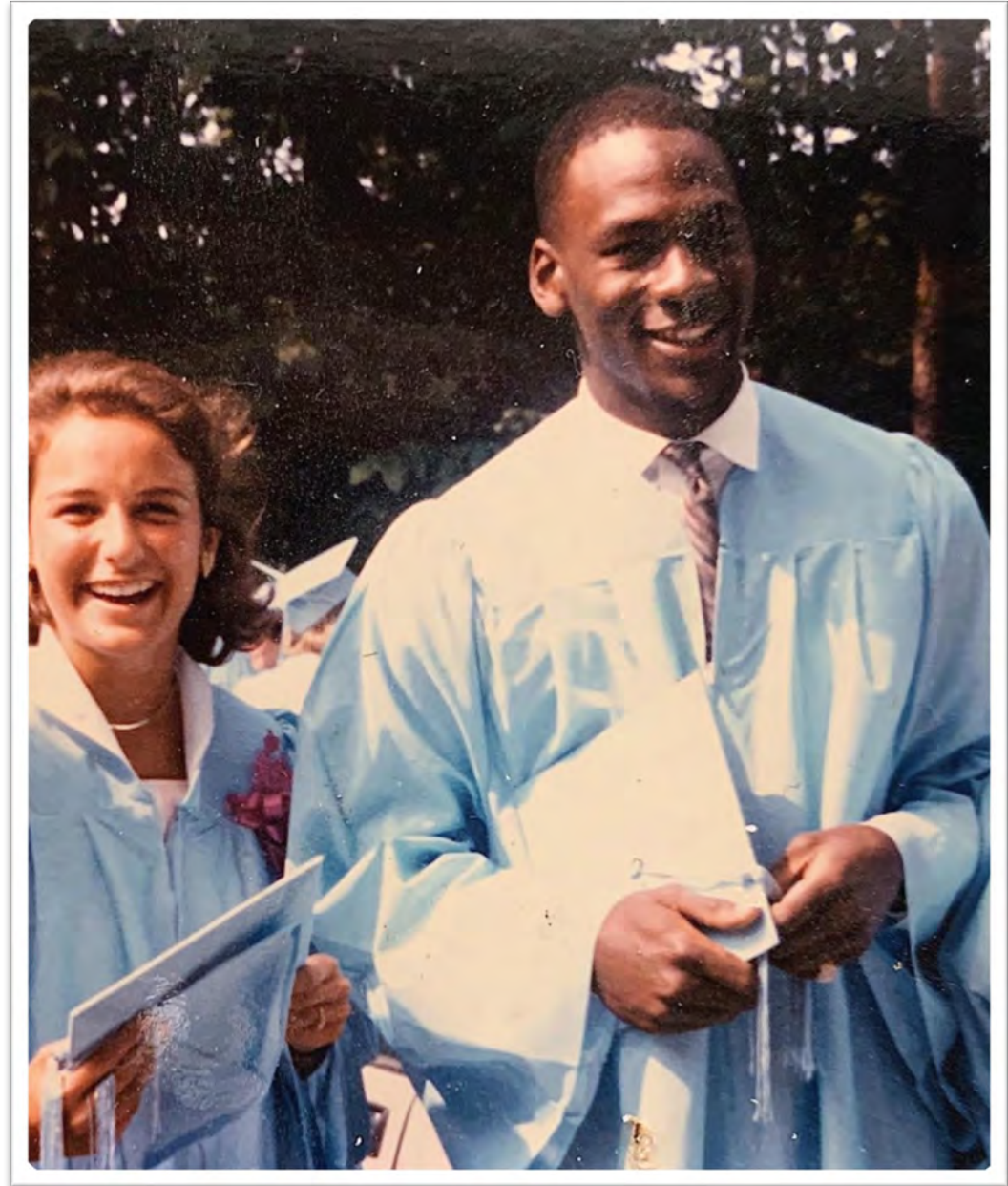
Average Rider Experience per Trip (Rider-centric)

# Law of Averages

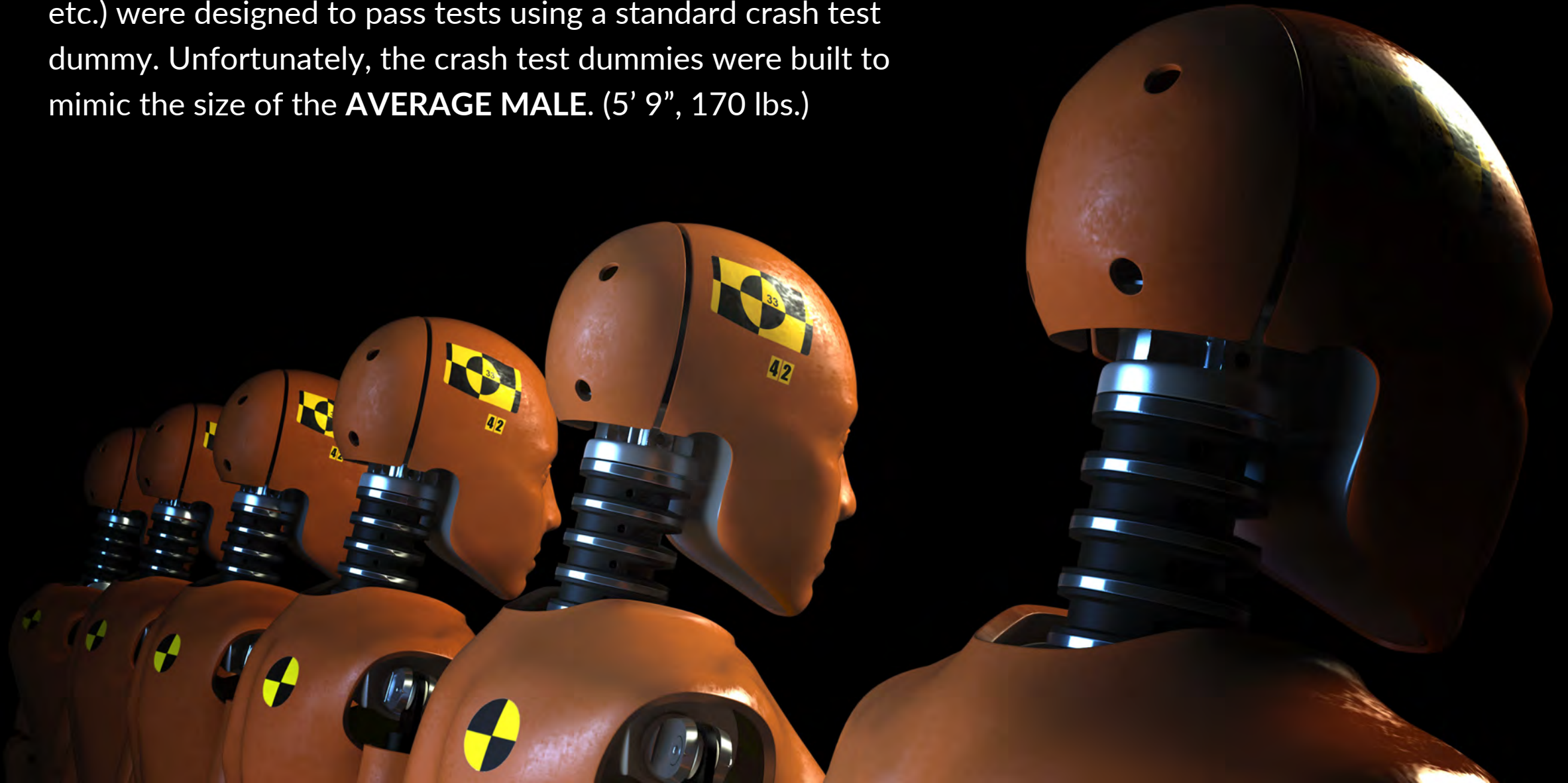
Beware of the

# Flaw of Averages

In the 1986, the **average salary** for a UNC-Chapel Hill graduate with a **B.A. in Geography** was **\$250,000/yr.**



For decades, automobile safety systems (seat belts, airbags, etc.) were designed to pass tests using a standard crash test dummy. Unfortunately, the crash test dummies were built to mimic the size of the **AVERAGE MALE**. (5' 9", 170 lbs.)



Women were 47% more likely to be seriously injured





# DATA DELUSIONS

1 Humans + Data

2 Flaws & Frames

3 Metric Fixation



# VALUE OF MEASUREMENT

”If you cannot measure it, you cannot improve it.”

- *Attributed (wrongly) to Lord Kelvin*

”Anything that can be measured can be improved.”

- *Paul Collier*

”What gets measured gets done.”

- *Tom Peters*



# VALUE OF MEASUREMENT



”Not everything that can be counted counts, and not everything that counts can be counted.”

*- William Bruce Cameron*

# POTENTIAL UNINTENDED CONSEQUENCES

## Campbell's Law

“Once a metric has been identified as a primary indicator for success, its ability to accurately measure success tends to be compromised.”

**Anything that can be measured AND rewarded can be gamed.**

# HOW METRICS CAN BE GAMED

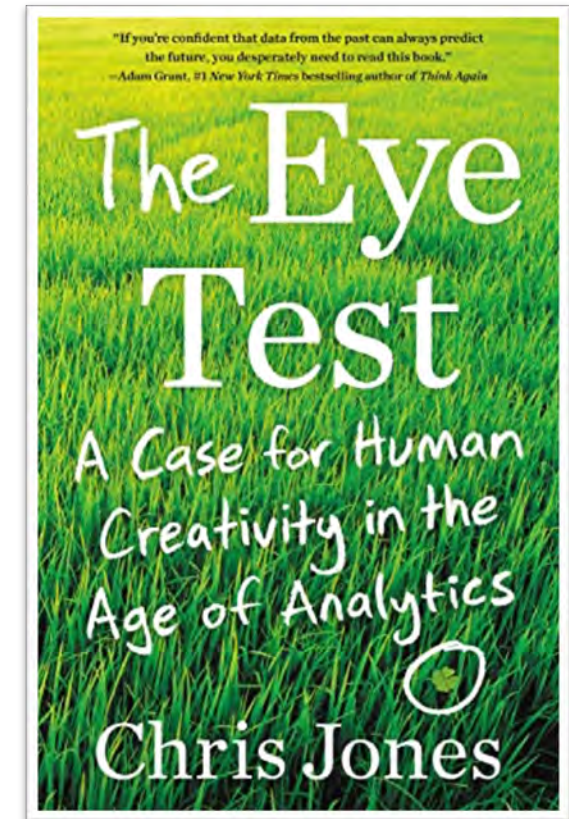
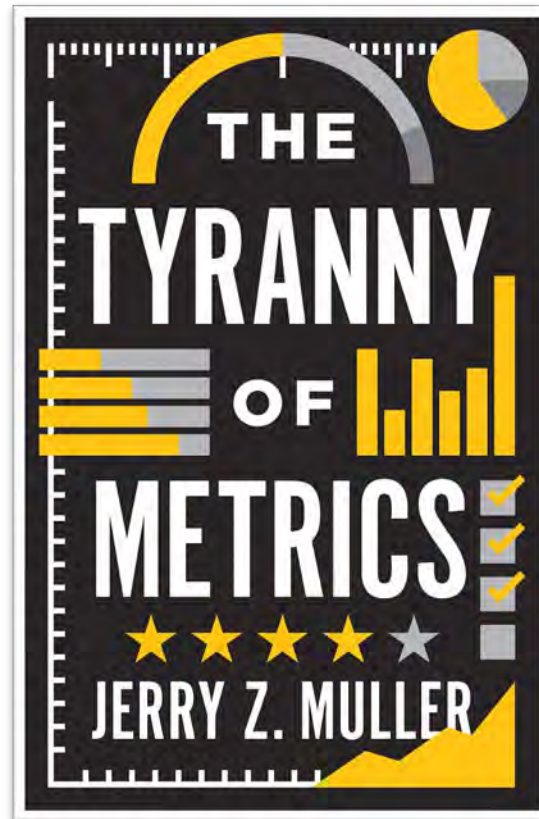
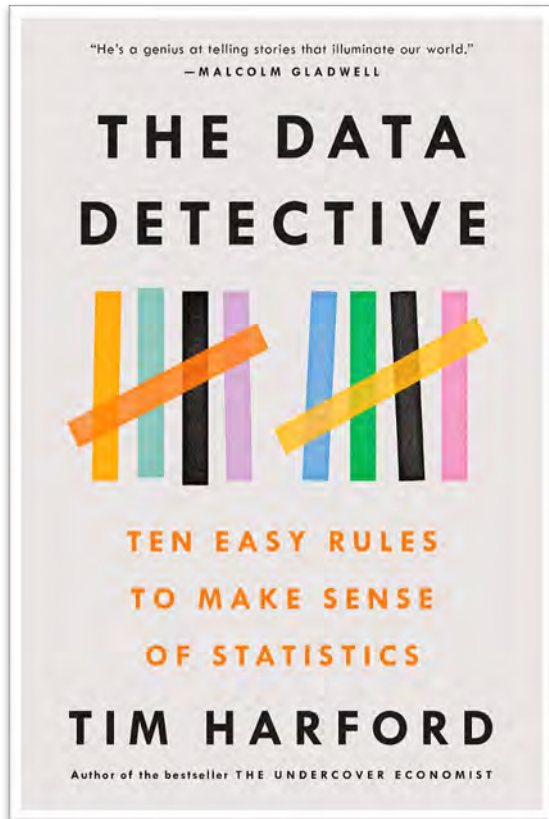
- 1 Gaming through creaming
- 2 Improving numbers through omission or distortion of data
- 3 Cheating, especially when the stakes of what is being measured are high



**Innovation  
requires  
curiosity**

**Good design  
requires  
good judgment**

# RESOURCES



# WHAT'S NEXT

Project **T**ransformation  
**B**y  
**D**esign

## Cats, Curiosity, and Decision-Making

Friday, June 16<sup>th</sup>

8:30 AM – 9:30 AM

Kingsmen Software @ Camp North End

[fasterglass.com/project-tbd](https://fasterglass.com/project-tbd)